

Appendix: School Handwriting Policy

Rationale

At St Augustine's the style of handwriting the children use is a cursive script. This is taught from the beginning of writing in Foundation Stage.

We have chosen this form of handwriting because we believe the cursive script:

- aids left to right movement
- eliminates reversals and inversions
- encourages words to be treated as units
- involves more efficient use of movement
- has a smoother flow which reinforces tactile learning
- requires no re-learning of letter shapes for joining
- gives clear spaces between words
- encourages correct spacing between letters
- facilitates earlier development of a personal style
- gives potential for speeding up writing

We teach letter-formation using 4 groups or 'families'. For the first three of these families, the first letter is contained within the others. The final group contains the rest of the letters.

Group 1: the 'i' family i l t u y j

Group 2: the 'c' family c o a d g q f s

Group 3: the 'r' family r n m h k b p

Group 4: the remaining letters x w z n e

We explicitly teach about the 'sound', 'name' and 'shape' (lower case and capital) of every letter, for example

The sound of the letter is /i/ (as in 'igloo').

The name of the letter is 'i'.

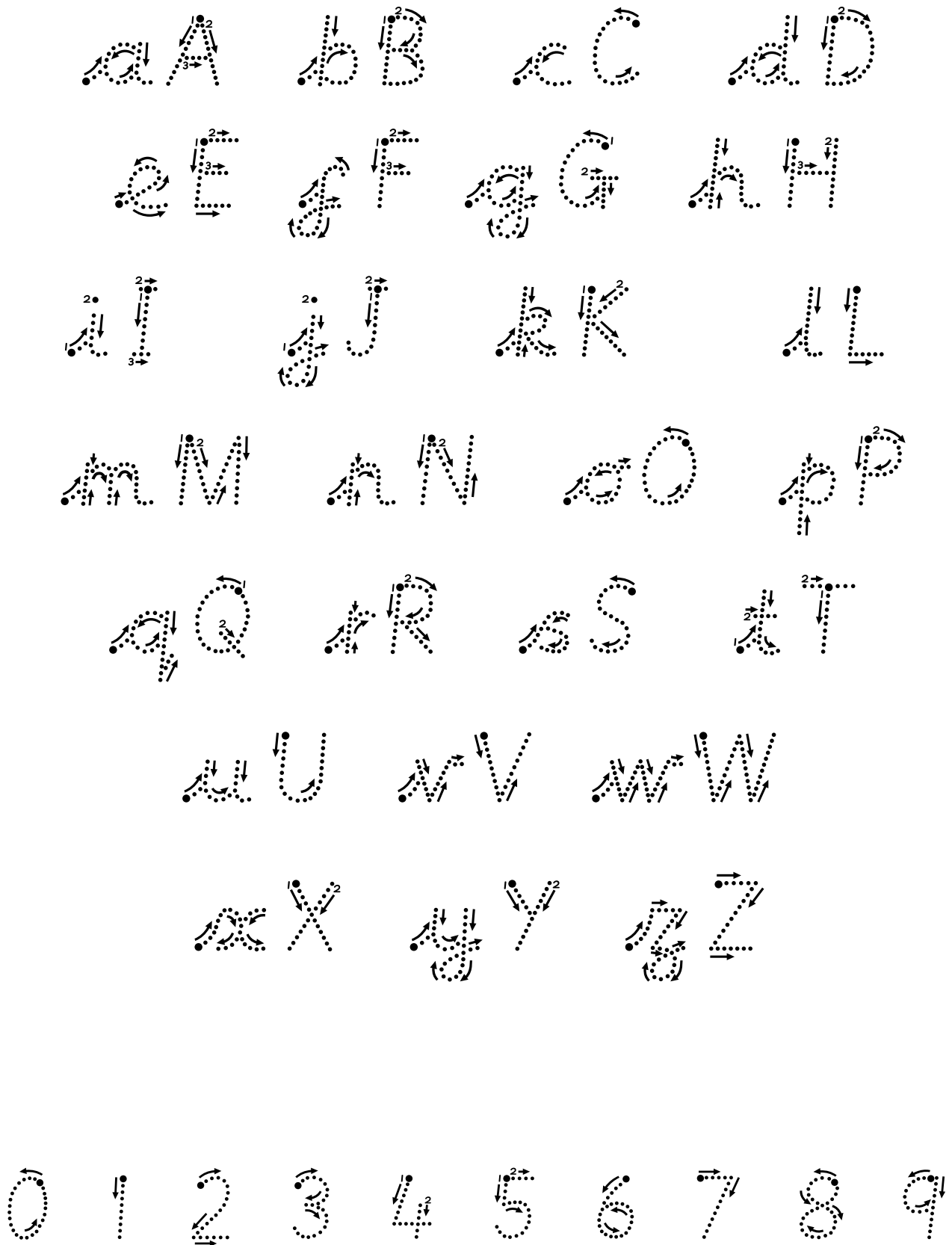
The shape of the letter is i (lower case)

or I (capital/upper case).

The rest of this supplement shows the full set of letter-shapes with a guide to formation and examples of different types of join.

The school has an electronic version of this script for the use of all staff.

The School Handwriting Font - Cursive Letter Formation



aA bB cC dD

eE fF gG hH

iI jJ kK lL

mM nN oO pP

qQ rR sS tT

uU vV wW

xX yY zZ

0 1 2 3 4 5 6 7 8 9

The School Handwriting Font - Joining the letters

Most are simple 'diagonal' joins:

ac af an au aw az al ah ae

ga gn gu gw gl gh ge

fc ff fn fu fl fh fe

ax ac ex xi xc xe

We need to use 'horizontal' joins from four letters

- o, r, v and w

oc of on ou ow oz ox oh oe

rc rf rn ru rw rl rh re

va vi vo vu ve

wa wf wn wu wl wh we