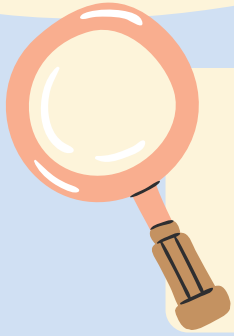


# SOLIHULL PRIMARY

## BIG SCIENCE CHALLENGE

# CHANGE AND ADAPT

SPONSORED BY  
nationalgrid

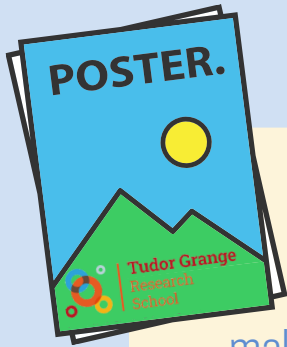


### ASK

a scientific question connected to change and adapt

### INVESTIGATE

by designing a test and presenting your findings or do a research project



### PRESENT

make a large poster or use models, props or apparatus to present your project in school



### SCIENCE FAIR

WEDNESDAY 5TH MARCH  
9.30AM - 12PM

TUDOR GRANGE ACADEMY SOLIHULL

The winning project from each school will be displayed at the science fair.

Winners will explain their project to the judges from National Grid.

There are prizes to be won for the following:

- KS1 overall winner
- Lower KS2 overall winner
- Upper KS2 overall winner
- Most innovative
- Best understanding of scientific content
- Clearest presentation
- Most interactive display

### SIGN UP

Scan me



The Science Fair will include science activities to participate in during the morning.

A member of staff from each school is needed to accompany the children.

One family member is welcome to attend.

OR VISIT [TINYURL.COM/BIGSCIENCECHALLENGE](https://tinyurl.com/bigsciencechallenge)